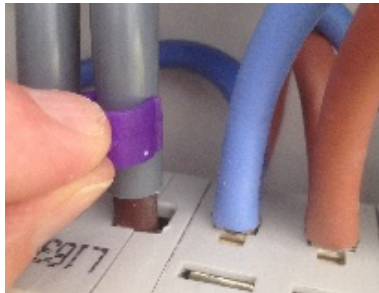
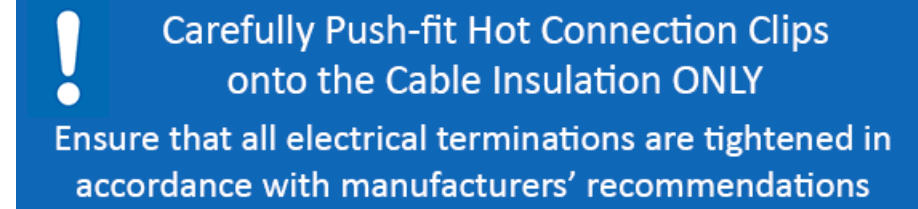
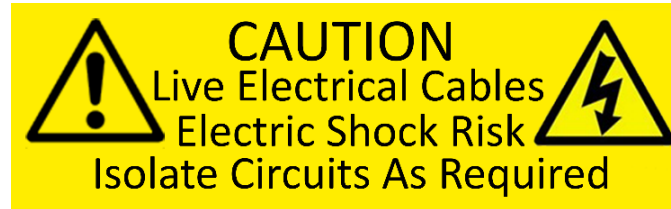


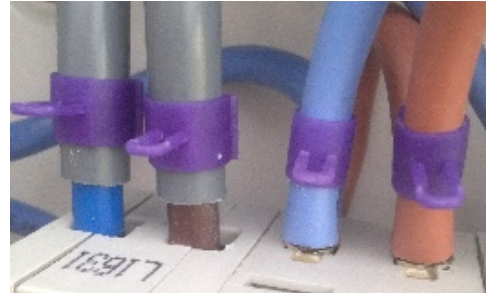
Hot Connection Clip (HCC) Installation Instructions.

Hot Connection Clips give warning of high temperature connections by colour change i.e. Purple / blue is Normal Temperature (OK), Pink indicates High Temperature (Warning).

MUST BE INSTALLED BY A COMPETENT ELECTRICIAN



Hold the HCC by its arm and carefully push the HCC onto the Cable Insulation adjacent to its connection terminal.



Fit HCCs on all cables



Right hand side HCC is Pink Indicating High Temperature Connection

If any Hot Connection Clip is heated (pink), carry out investigation of and repairs to the connection. Adhere the supplied self-adhesive Information for Electricians label in a location near to the installation.

Advice can also be sought at; www.safeconnectaustralia.com.au

Not Suitable for Unprotected Use Outdoors or in Direct Sunlight. Vulnerable to attack by Ultra-Violet Light (UV)

LIMITATIONS; This device will not prevent electrical faults or fires but will aid in monitoring abnormal temperatures and will give visual indication of electrical connection faults and potential fire risks.

The Hot Connection Clip does not replace the need to formally install, test, inspect and maintain electrical installations as per the Electricity Act and its associated regulations and as per Electrical Installations and Wiring Rules.